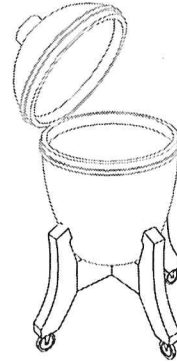


# Base Unit Assembly

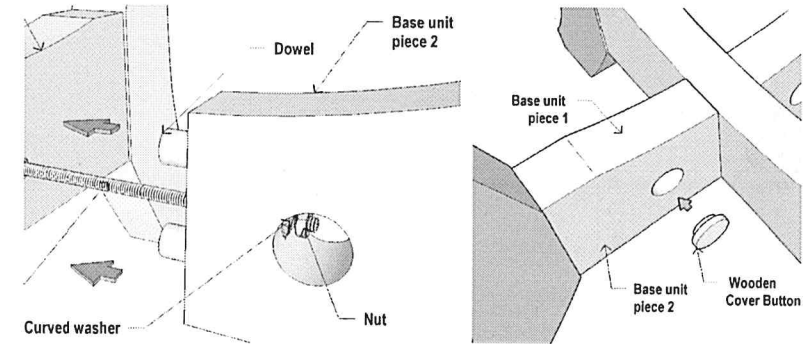
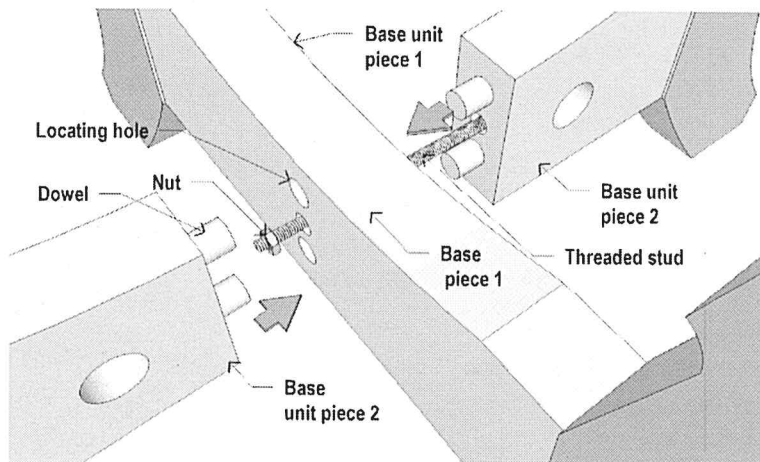
## Part List

1. Base unit piece 1 (1)
2. Base unit piece 2 (2)
3. Threaded rod with nuts (2)
4. Slotted washers (2)
5. Braked caster (2)
6. Non braked caster (2)
7. Wooden cover buttons (2)
8. Wrench



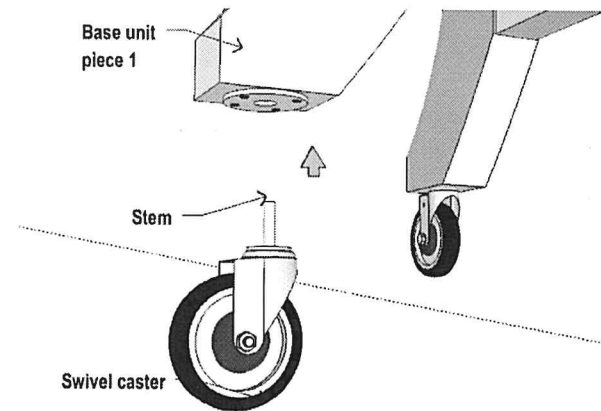
## STEP 1: Base Assembly

1. Push the threaded rod with nuts through the centre hole in the base unit piece 1. (There is no need to remove the nuts).
2. Push the Base unit piece 2 onto the Base unit piece 1, ensuring the threaded rod and nuts appear in the side access hole.
3. Insert slotted washers and tighten nuts with a wrench.
4. Push on Cover Buttons. Glue can be used.



## STEP 2: Caster assembly

1. Insert casters into base unit legs ensuring braked casters are side by side at the back.



**Congratulations you have completed the installation of your base unit, ensuring that the ventilation grill on your unit falls in between any two legs.**